

## Content

**2**

<b>2.1</b>		Page
	Leak-proof connections without swarf on the roof and wall	9
<b>2.2</b>		
	Make reliable, high-speed screw fastenings without tip failure, even in high-strength steel	10
<b>2.3</b>		
	Screwdriving at high speed	11
<b>2.4</b>		
	Mobile power for decking and siding	12

## 2.1 Leak-proof connections without swarf on the roof and wall

The new overlap screw with sealing washer S-MS combines a new „PS“ function for thin clamping thicknesses too, thanks to technology for non-cutting screwdriving.

In 2008, Hilti revolutionized the market with the first non-cutting screw. This technology is now also available as a stainless version and with a sealing washer. The new S-MS is perfectly designed for the assembly of steel or aluminum packages measuring up to 2x 1.0 mm.

Hilti's many years of experience with this cutting-edge technology allows users to work with very little contact pressure, especially in wall applications.

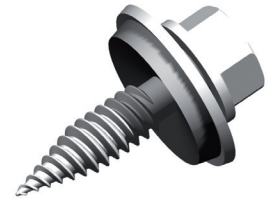
The high hexagon head improves the user's guide and power transmission, thus preventing any damage to the surface as a result of slipping.



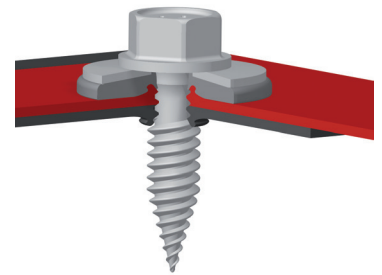
„PS“ function for thin material thicknesses due to optimized undercut geometry.

Once Hilti had launched the „PS“ function for self-drilling screws with a drilling capacity of more than 3 mm on the market, there was high demand for this function in thinner sheet thicknesses too. With a special undercut, Hilti is now filling this gap too by offering packages from 2x 0.4 mm to 2x 1.0 mm. This solution combines a high degree of application safety, screw connection impermeability, simple and fast handling as well as high positioning comfort.

It does not matter if the screw is overtorqued or fastened in a torque-oriented manner. The sealing washer is perfectly pressed and leak-proof at all times.



2



## 2.2 Make reliable, high-speed screw fastenings without tip failure, even in high-strength steel

2

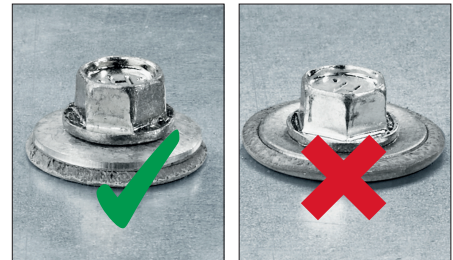
Hilti screw fastening technology sets new standards because, on the one hand, virtually no drill point failure occurs even in high-strength steel with a thickness of up to 15 mm and, on the other, because sealing washers are always perfectly and reliably compressed even when the screws are driven at high speed.

We offer an immediate solution for all of your screw fastening applications where a drilling capacity of greater than 3 mm is required.



### „PS” sealing through customized below-head geometry

The sealing washers at screws on decking, siding and facades are often over compressed. Excessive pressure between the screw head and the sheets fastened causes fine cracks to occur in the EPDM sealing washer. This leads to leakage through the outer skin of the building at the fastening point and thus to an increase in the amount of subsequent remedial work required. The innovative and patented “PS” feature incorporated in all Hilti self-drilling screws with a drilling capacity of more than 3 mm provides a simple solution to the problem of over compression. Hilti screws with this new feature can be identified by the “PS” logo on the package.



### The Hilti „RT“-drill point for fast, reliable screwdriving characteristics

Burned out or broken drill points are not only a thorn in the side of the user. The remedial work required is costly and time-consuming. Thanks to the new, patented, RT wave-form cutting edge, burned out drill points become a thing of the past, even in high-strength S355 steel. Rapid removal of the drilling chips allows the screw to penetrate the base material more quickly and prevents point burn-out in materials with a thickness of up to 15 mm. All screws featuring the new technology carry the “RT” logo on the package.



## 2.3 Screwdriving at high speed

The S-MS is clearly much more than “just a screw”. It displaces the metal around it as it penetrates and therefore creates no troublesome metal chips. In its role as a part of the system comprising the SDT 5 stand-up tool and the new ST 1800-A22 cordless metal construction screwdriver, the S-MS cuts screw fastening time by up to 60 percent.

The Hilti S-MS is available in single or collated form and is perfectly matched to the other components of the system. High-speed fastening is possible because the screws, the screwdriver and the stand-up tool all work together in perfect harmony, achieving a considerable productivity increase over conventional screw fastening systems. Screwdriving becomes a new, high-speed experience!

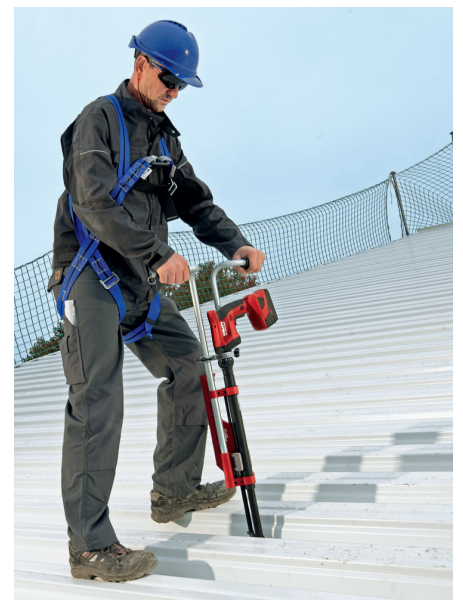
The innovative screw-fastening technology incorporated in this self-piercing overlap screw brings many advantages. The metal around the screw, for instance, is simply displaced as it penetrates. As no metal chips are formed there’s no need for subsequent cleaning up and the risk of discoloration due to corrosion of metal chips can be ruled out.

Because metal is simply displaced as the screw penetrates, the screw hole remains surrounded by a greater volume of metal, resulting in a higher permissible loading capacity compared to conventional screw fastenings. As a result, the S-MS screw achieves best-in-class load values.

The special “ballistic” shape of the screw tip prevents slipping when starting. Maximum reliability is thus guaranteed, even when driving screws at an angle or when the working surface is wet.

The ergonomically designed SDT 5 stand-up tool for use with collated screws lets the operator work in a relaxed, upright and thus less-tiring standing position, even for long periods. Thanks to its pivoting nose section, the tool can be used comfortably on trapezoidal profile sheets with deep, narrow corrugations.

The third member of this screw fastening system, and ideal for the job, is the new ST 1800-A22 cordless metal construction screwdriver.



## 2.4 Mobile power for decking and siding

2

With the power of a corded tool, the new Hilti ST 1800-A22 cordless metal construction screwdriver makes light work of the toughest jobs, even on thick, solid steel beams. With Hilti's comprehensive range of screws and matching accessories it forms an unrivalled cordless system that's unique in this field. Go mobile and raise your productivity – with the Hilti Screw Fastening System and this outstanding cordless tool from the Hilti 22 volt range.



### With the power of a corded tool, the ST 1800-A22 makes light work of the toughest jobs

Ideal for driving screws in sheet metal or aluminium structures and for fastening profile metal sheets to steel or timber supports, the red dot design award-winning ST 1800-A22 brings mobile power to decking and siding work. Thanks also to the Hilti ST-SG screw guide, sandwich panel screws can now be driven more efficiently and reliably than ever before. Developed specially for this application and single-hand use, the ST-SG screw guide enables you to drive long sandwich panel screws with ease, accuracy and without scratching or denting the sensitive panel surface.



### Compact and perfectly balanced

The tool's comfortable in-line grip allows optimum power transmission and a relaxed hand position.



### Extremely cost-efficient

The SDT 5 helps you increase your output by up to 300%. It lets you work cordlessly while maintaining a comfortable, upright stance.



### Optimum screw guidance

The practical ST-SG screw guide lets you drive sandwich panel screws accurately with one hand and without denting the panels.

